

# Exascend FAE Tool User's Guide

Exascend Solutions

Release Date: 2022/05/30

Software Version: 1.0.1.1~1.0.1.2

# Contents

- 1 Introduction
- 2 Environment
- 3 Usage
  - 3.1 Upgrade
  - 3.2 Analysis

# 1 Introduction

---

This tool is used for the following functions:

- Upgrade disks to the specified firmware, it is recommended that backup all important files before performing this operation.
- Collect disks information to help locating drive problems.

## 2 Environment

---

Windows 10 32-bit/64-bit.

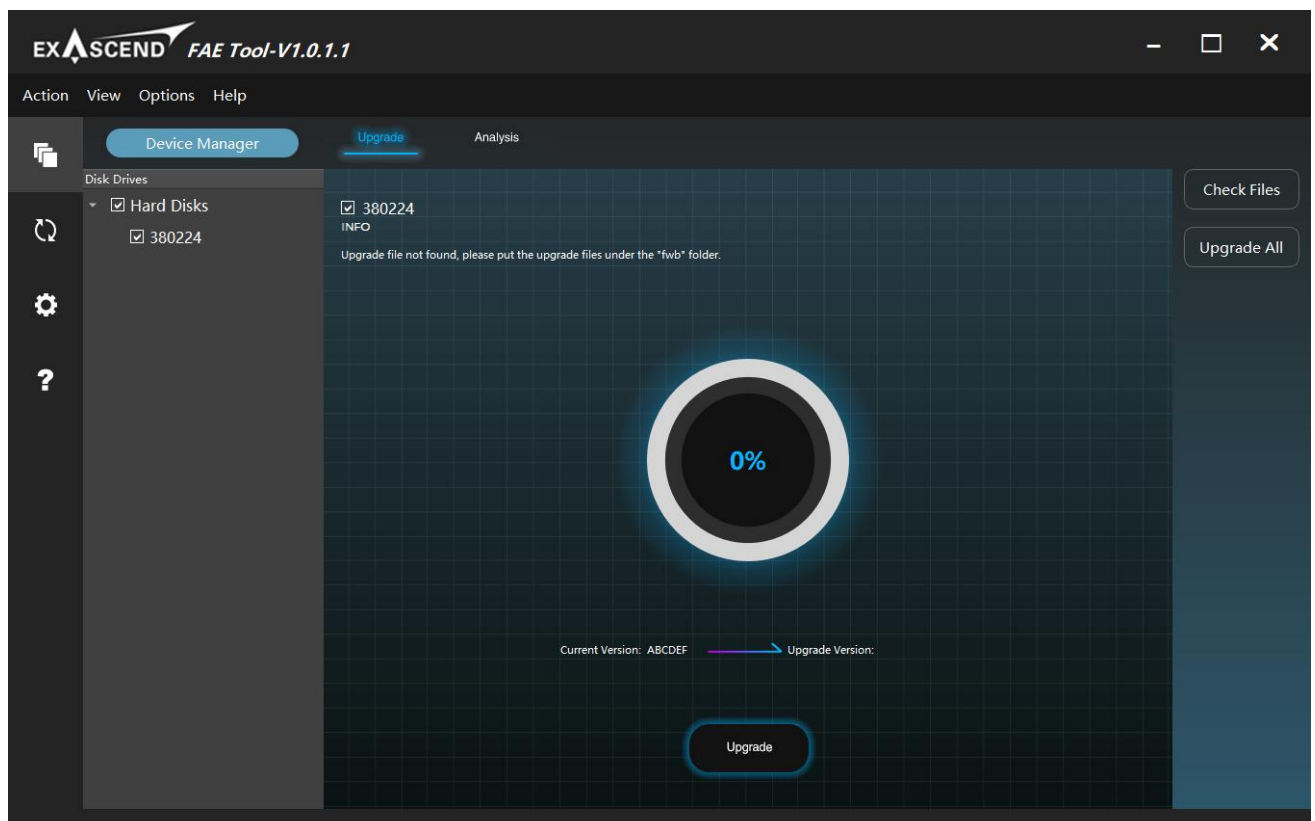
Please ensure that package – KB2999226 is installed on your system.

## 3 Usage

---

### 3.1 Upgrade

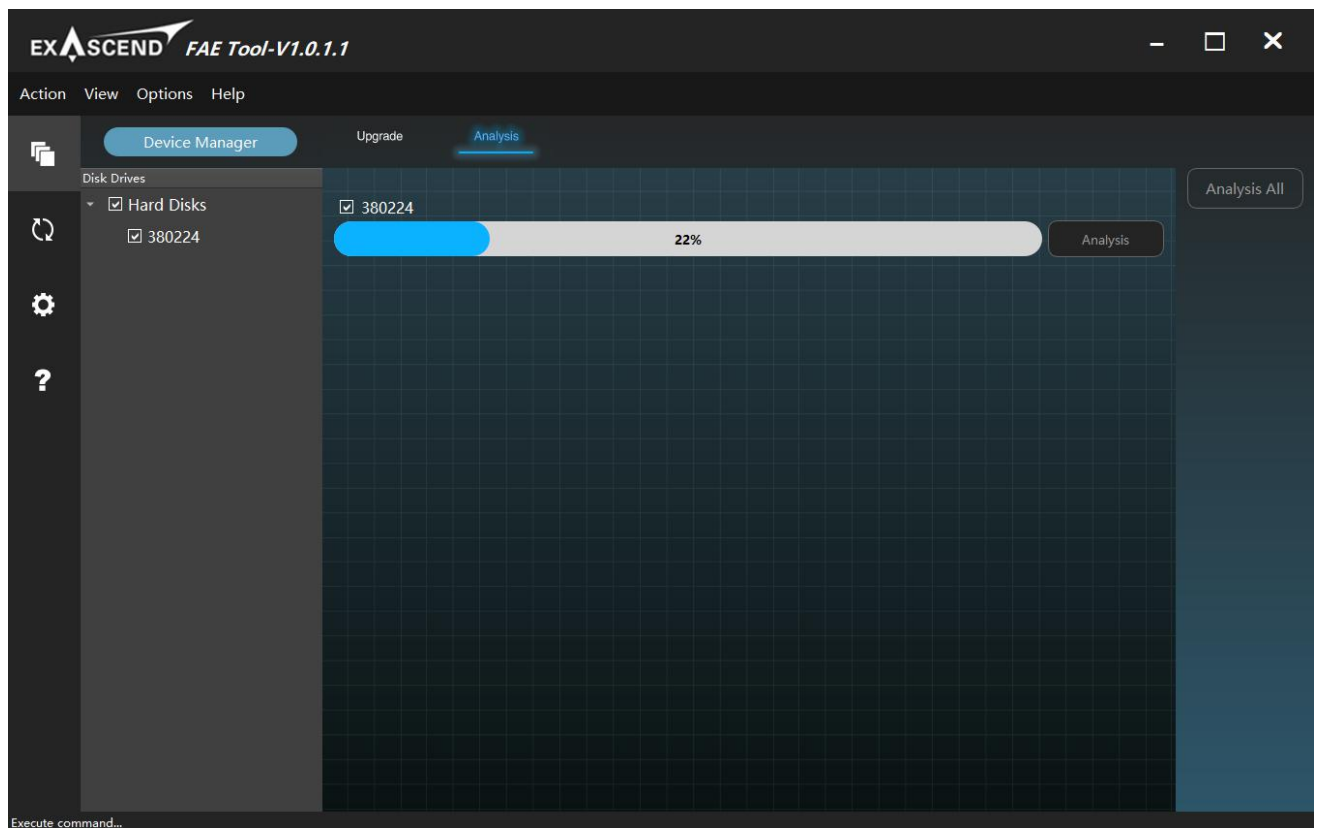
1. Please put the upgrade files(\*.fwb) under the "fwb" folder.
2. Run the tool as the administrator, click 'Upgrade' table.
3. Click 'Scan Drives' button, then select the target drive.
4. Click 'Check Files' button, tool will display the upgraded information of the selected disks as figure below.



5. Click 'Upgrade All' button, the progress bar to 100% indicates the success of the upgrade.

## 3.2 Analysis

1. Run the tool as the administrator, click 'Analysis' table.



2. Click 'Analysis All' button to collect drive information and generate \*.vda file in 'analysis' folder, send the file to us to analyze.

